



# VISION

x x x x  
x x x  
x x  
x

Hey Church,

Habbakuk 2:2 says, "Write the vision;  
make it plain on tablets, so he may run  
who reads it."

So here it is. The developing vision we  
believe God has impressed upon our  
hearts for the future of Life Church...  
on glossy paper rather than tablets,  
which should make it easier to run with!

We'd love you to pray over it.  
We'd love you to serve within it.  
We'd love you to sow into it.

We're convinced that the hand of God  
is upon this church to bring light, life  
and love to the people of Bedworth and  
beyond. So read on, allow the Lord to  
stir your heart and believe with us for  
His kingdom to come and His will to be  
done, here on earth as in heaven.

Greater things are most definitely still  
to be done here!

All our love

*Danny & Naomi Murphy x*



# OUR HISTORY.



**Life Church came into being in 1975, when a small company of around 30 adults and children moved from Greens Road Pentecostal Church in Coventry to plant what was then known as Bedworth Pentecostal Church.**

**Initially hiring a school hall in Exhall to hold services, by September 1975 this faith-filled group of believers had completed the purchase of the school building in Hobb Lane with the help of a £10,000 loan from the Assemblies of God (AOG). An additional £10,000 loan was also obtained from AOG, which enabled**



**some renovation work to be undertaken. In December 1975, the first service was held in the new building, with corrugated tin sheets for windows, paraffin lamps for lighting, and an old coal stove for heating!**



**In 1976, John Partington was appointed as the church's first Pastor, and the next few years saw many people saved and added to the church. The church extended its reach into the local community, with regular outreach events, food hampers for local families, and the launch of a pre-school nursery. In 1984, a Community Manpower project was**

**launched, a government funded initiative that mobilised the long-term unemployed to work within and for the benefit of the local community through things like painting and decorating, gardening and transportation amongst other things. At its height, this project employed 70 people with an annual budget of £350,000.**

By the early 1980's, the Sunday congregation had outgrown the main hall of the church building, with between 120 and 150 people attending weekly. Nicholas Chamberlaine school was rented to hold services in, and in 1985 negotiations were started and completed to purchase a site on Bulkington Road. A new building fund was established and church members were encouraged to prayerfully consider making a pledge towards the fund, to be honoured within 3 months. 120 pledges were submitted, raising a total of £120,000. A successful businessman within the church also donated £2 for every £1 that was given, taking the total to £360,000. In 1988, work on the new building commenced.



x x x x  
x x x x  
x x x  
x x  
x  
x



**The new building officially opened in June 1989, by which time the total site and build cost was £605,000. £505,000 had already been given by the congregation, with a 20-year mortgage taken out to cover the outstanding amount. This was paid off in full within 7 years.**

**From its Bulkington Road location, the church has continued to grow in both size and influence under the leadership of various pastors and their teams. Many new projects, initiatives and even congregations have been either run by or run from the church.**

**Under its various names (Bedworth Pentecostal Church, The Christian Centre, King's Community Church & Life Church International) and under its various leaders, we are thankful for the way God has displayed His faithfulness in building His Church and extending His Kingdom over the years. We are also grateful to the many men and women of God who have established some strong foundations upon which we can build towards an even more fruitful future.**

***WE FIRMLY BELIEVE OUR BEST DAYS ARE STILL AHEAD OF US.***

**WHAT GOD HAS SAID.**

***“God is not human, that he should lie, not a human being, that he should change his mind. Does he speak and then not act? Does he promise and not fulfill?”***

**Numbers 23:19**

**We believe as we move into our destiny, what we are about to step into is simply a fulfilment of all that God has promised over many years.**

**Over the years, many prophetic words have been spoken into and over Life Church, including:**

***‘The church will be like the hub of a wheel with many spokes stretching out from it. The church’s influence will extend far beyond its location.’***

**Keith Moore, 1984**

***‘The church will truly be a city on a hill that cannot be hidden.’ (Matt 5:14)***

***‘The church will be a ‘gateway church’ - a place people would come to from all over and a place people would be sent out from.’***

***‘The church will move to a new location in a very visible setting.’***

**Power House Prayer Event, 2003**

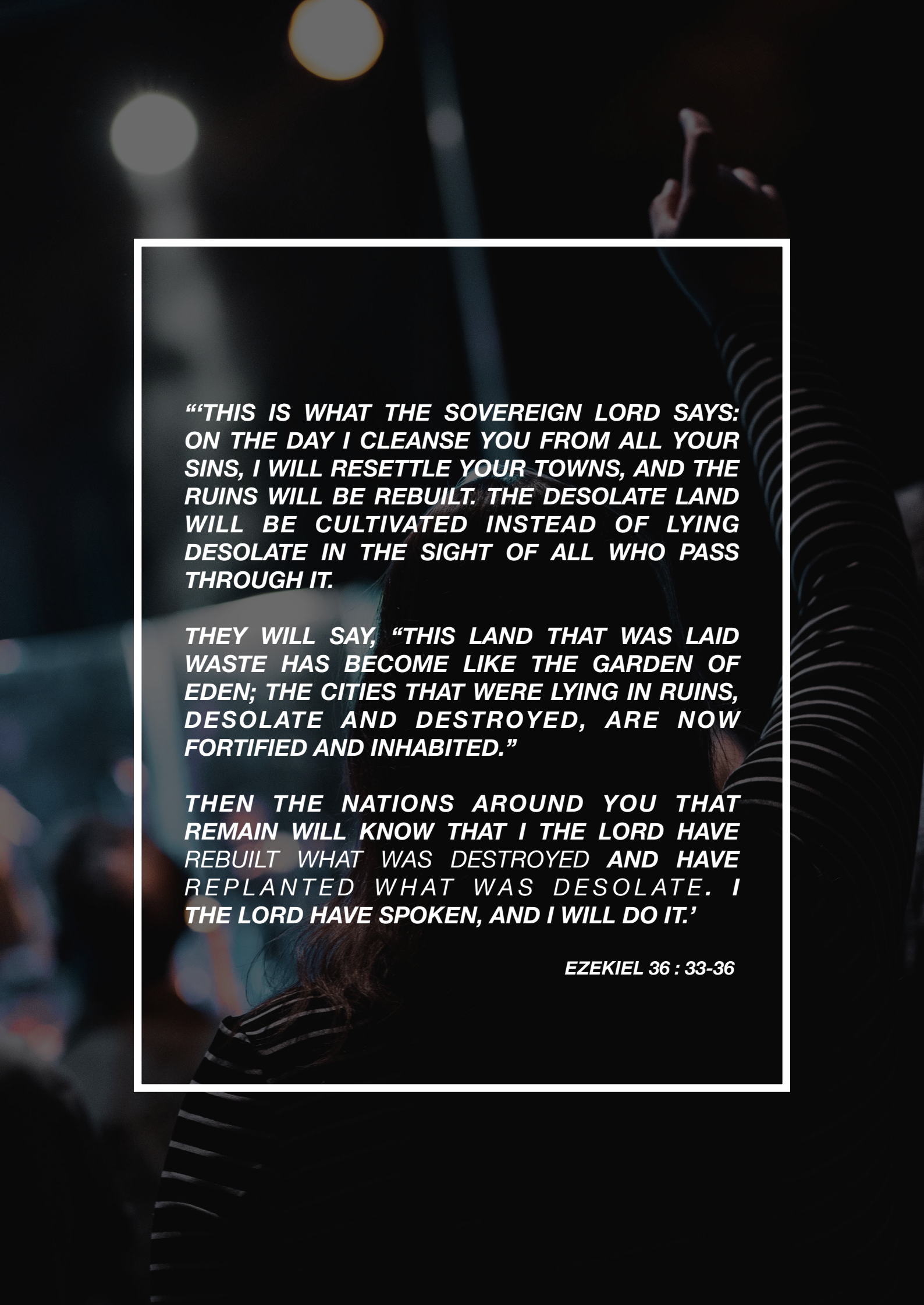
***‘To enlarge the place of our territory and become an apostolic house with a larger footprint’***

**Nicolas Tsakis, 2013**

***‘The church’s future will look different from its past, but will retain some of the hallmarks’***

**Dave Belfield, 2018**

**Following a challenging chapter in the church's history, Danny & Naomi Murphy felt a clear call to come to lead Life Church in October 2018. Amongst everything God revealed to them, God gave them a promise for the church from Ezekiel.**



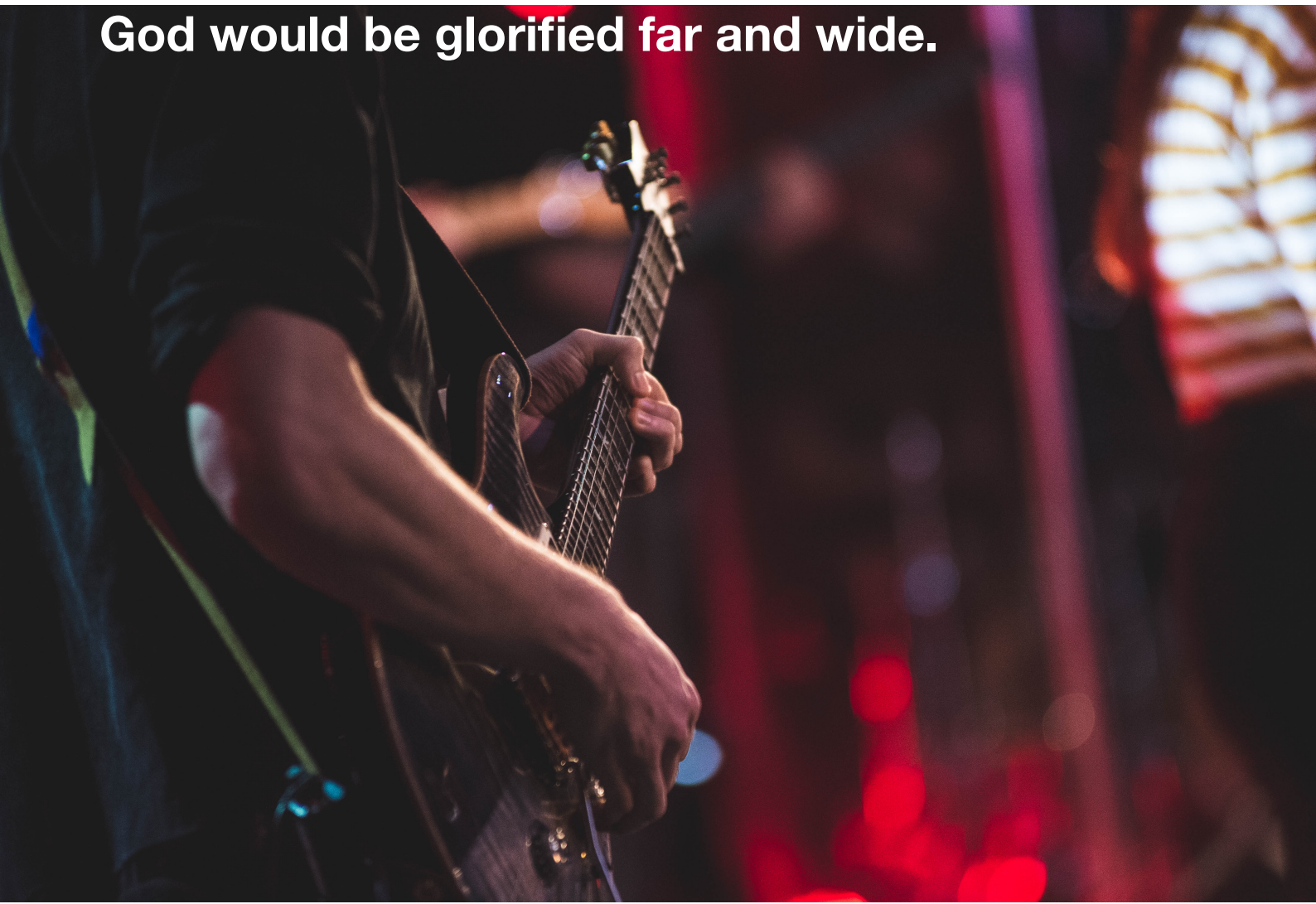
**“THIS IS WHAT THE SOVEREIGN LORD SAYS:  
ON THE DAY I CLEANSE YOU FROM ALL YOUR  
SINS, I WILL RESETTLE YOUR TOWNS, AND THE  
RUINS WILL BE REBUILT. THE DESOLATE LAND  
WILL BE CULTIVATED INSTEAD OF LYING  
DESOLATE IN THE SIGHT OF ALL WHO PASS  
THROUGH IT.**

**THEY WILL SAY, “THIS LAND THAT WAS LAID  
WASTE HAS BECOME LIKE THE GARDEN OF  
EDEN; THE CITIES THAT WERE LYING IN RUINS,  
DESOLATE AND DESTROYED, ARE NOW  
FORTIFIED AND INHABITED.”**

**THEN THE NATIONS AROUND YOU THAT  
REMAIN WILL KNOW THAT I THE LORD HAVE  
REBUILT WHAT WAS DESTROYED AND HAVE  
REPLANTED WHAT WAS DESOLATE. I  
THE LORD HAVE SPOKEN, AND I WILL DO IT.’**

**EZEKIEL 36 : 33-36**

**Coming to Life Church, Danny & Naomi possessed a strong conviction that God would rebuild and replant in some of the areas to which the Enemy had brought destruction and desolation. And that as a result, God would be glorified far and wide.**



**This has been reinforced by some of the significant words brought by some men and women of God in recent months.**

**In February 2019, Pastor Denise Curgenvan** brought a word for the church called, “Ushering in a New Glory Day”. That, *“The glory of this present house will be greater than the glory of the former house,’ says the LORD Almighty. ‘And in this place I will grant peace,’ declares the LORD Almighty.”* (Haggai 2:9)

**In March 2019, Pastor Derek Smith** brought a word for the church called, “Reinvention”. Taken from Acts 11, Pastor Derek declared that it was time for the church to reinvent itself, embark upon a journey of change, and become a church very much like the church in Antioch – an apostolic house of great influence.

**In July 2019, Pastor Alan Hewitt** brought a word for the church called, “The Honey’s on the Way”. Taken from Judges 14, Pastor Alan encouraged the church that there is some blessing coming to the church on the other side of the battles that have been faced. He also declared that it is time for Life Church to “catch up with its destiny.”

# OUR VISION

*“For the vision awaits an appointed time; it testifies of the end, and will not lie. Though it lingers, wait for it, since it will surely come and not delay.”*

Habbakuk 2:3



**We believe we are entering a season of vision fulfilment. That ultimately, what God has always said He will do, He is going to do... and soon!**

**Towards the end of our 21 Day fast in early 2019, Danny felt God impressed a verse upon him that summed up the essence of the vision God has called Life Church to outwork.**

**In Acts 1, just before Jesus ascends to heaven and entrusts the establishment and leadership of his Church to His apostles, He instructs them to wait in Jerusalem for the gift of the Holy Spirit. He then shares with them the purpose of this gift:**

**“But you will receive power when the Holy Spirit comes on you; and you will be my witnesses in Jerusalem [*locally*], and in all Judea and Samaria [*regionally*], and to the ends of the earth [*internationally*].”**

**Acts 1:8**

**Just like the Early Church, and indeed as has been prophesied and hinted towards in our past, we feel Life Church is called to be a church empowered by the Holy Spirit that has a local, regional and international impact.**

**In short, our vision statement at Life Church is:**

**TO**  
**TRANSFORM**  
**OUR TOWNS,**  
**REACH OUR**  
**REGION AND**  
**HAVE**  
**INTERNATIONAL**  
**INFLUENCE.**

# **“TRANSFORM OUR TOWNS”**

**We believe that God has called us to be a “city on a hill” within the towns of Bedworth and Nuneaton. To be a place where people sense God lives, by His Spirit. A place of refuge and restoration for those within our community.**

**Having commissioned and completed a community report in April 2019, we identified the most prevalent and prominent social concerns. In response to the needs we have identified, over the next few years we intend to:**

## **1. FOCUS ON THE FAMILY**

**The borough of Nuneaton & Bedworth has the largest population of families in the county of Warwickshire. There are thought to be 21,616 households with dependent and non-dependent children, whilst nearly 10% are lone-parent households. Nuneaton & Bedworth has the largest concentration of children living in low-income families in Warwickshire, at 19.5%. 15.7% of children in Nuneaton & Bedworth are living in out-of-work benefit households. Youth provision is at an all time low with only four churches running a weekly youth group. In 2016 Nuneaton & Bedworth had the highest rate of under-18 conceptions in Warwickshire with the amount of teenage pregnancies being well above the national average. The borough also has the highest levels of admission for alcohol specific conditions in under-18s, almost double the national average.**

**SOMETHING NEEDS TO CHANGE. THE FAMILY UNIT IS UNDER INCREASING STRAIN, WITH CHILDREN AND YOUNG PEOPLE INCREASINGLY BEING RAISED IN ENVIRONMENTS OF FAMILIAL DYSFUNCTION.**

**AS SUCH, BY GOD'S GRACE IN THE COMING YEARS WE WANT TO:**

- Offer practical support through the development of a “Families Centre”, offering things such as positive parenting courses, life skills classes, employability classes, debt counselling and money management courses
- Develop a support programme for young parents, meeting practical needs and also helping young mums and dads re-integrate into education or employment
- Engage in targeted schools work to offer additional learning and mentoring support to local schools, raising self-esteem and aspiration
- Offer out-of-school care through things such as holiday clubs, homework clubs, breakfast clubs and after-school clubs to take the pressure off over-burdened families and further nourish and nurture the next generation
- Further expand our recently launched school clothing bank to help meet the practical needs of low income families
- Open a Foodbank at Life Church each Wednesday, again helping those with low incomes
- Develop excellent facilities and opportunities for young people where they can enjoy a safe space to engage in positive activities such as sports, music and creative arts, reducing social disaffection and risky behaviours

## **2. HELP THE HOMELESS**

**During the past 8 years, formal homelessness has increased by 44%. It's estimated that 33,400 adults in Warwickshire may be sofa surfing or living in unsecure accommodation. In 2017/18, Nuneaton & Bedworth council accepted 180 applicants as unintentionally homeless, eligible and in priority need, compared with 128 in 2016/17 of which 132 had dependent children.**

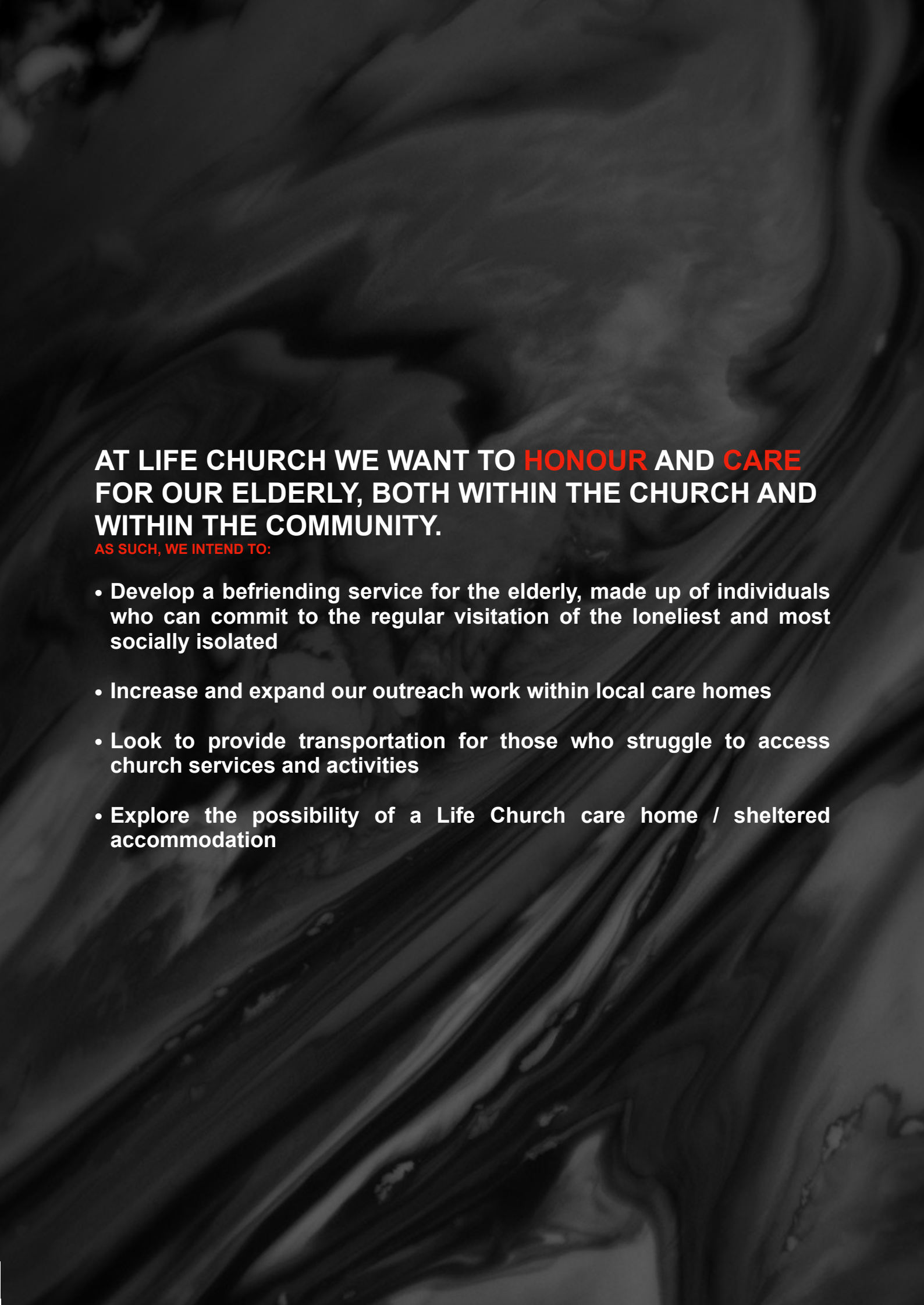
## **HOMELESSNESS AND THE RISK OF HOMELESSNESS IS **GROWING** WITHIN OUR COMMUNITY.**

**WE INTEND TO RESPOND TO BOTH THE CAUSES AND CONSEQUENCES BY:**

- **Strengthening Compass, our existing feeding programme for homeless people, by establishing daytime drop-in services. Partnering with other agencies like CAP & P3, we aim to help people move from dependency to self-sufficiency**
- **Developing recovery programmes such as Celebrate Recovery and forging partnerships with organisations like Teen Challenge to help those battling with addictions**
- **Engaging in targeted detached work**
- **Exploring the development of a counselling service that could be run by or at least alongside Life Church**
- **Raising the awareness of and offering a response to the growing societal mental health crisis through events, training and advice**

### **3. LOOK AFTER THE LONELY**

**Nuneaton & Bedworth presently has 24,477 over 65's living in the borough. This figure is expected to increase by 49% by 2039, with the over-90 population set to increase by 226%. Loneliness and social isolation will become more of a concern as the number of widows and widowers increases. This has an adverse impact on people's health, as dementia and cognitive decline is strongly linked to loneliness and social isolation.**



**AT LIFE CHURCH WE WANT TO HONOUR AND CARE  
FOR OUR ELDERLY, BOTH WITHIN THE CHURCH AND  
WITHIN THE COMMUNITY.**

**AS SUCH, WE INTEND TO:**

- **Develop a befriending service for the elderly, made up of individuals who can commit to the regular visitation of the loneliest and most socially isolated**
- **Increase and expand our outreach work within local care homes**
- **Look to provide transportation for those who struggle to access church services and activities**
- **Explore the possibility of a Life Church care home / sheltered accommodation**

# ***REACH OUR REGION***

**We believe Life Church is purposed and positioned to be an apostolic house for the region. Our heart is to be a blessing to the wider Church across the Midlands, a place from which other local churches can be resourced, refreshed and renewed. This has been prophesied in the past, and we believe we will see this realised in our future.**

**Alongside a desire to add strength to established churches, we very much aspire to be a church-planting church. In the coming years, we want to raise and release leaders who will plant churches in surrounding localities, either as campuses of Life Church or as autonomous churches. Our passion lies not in building a Life Church 'empire', but in seeing the Kingdom of God extended.**

**Danny has recently been invited to be one of the Zone Leaders within the Central West area of the Assemblies of God, overseeing 20 churches across Warwickshire, the West Midlands and into Oxfordshire. This seems to already present us with an opportunity to extend our reach across the region by offering pastoral and practical support to local leaders and leadership teams. We will begin hosting regional summits and leadership development days in early 2020.**

# ***INTERNATIONAL INFLUENCE***

**Mission has always been in the DNA of Life Church. We want to ensure the church is increasingly active within the global church, and as such we are committing 10% of our annual income towards our Global Missions fund to be overseen by our newly-formed Global Missions team. All funds and efforts will be directed towards 3 key areas:**

- Serving the Persecuted Church**
- Helping Children in Poverty**
- Supporting Church Planters**

**We will soon be strengthening our work with church plants in Serbia & Ukraine, whilst also forging new partnerships with Feed the Hungry & Open Doors.**

**TO  
TRANSFORM  
OUR TOWNS,  
REACH OUR  
REGION AND  
HAVE  
INTERNATIONAL  
INFLUENCE.**

A woman with short dark hair and glasses, wearing a bright orange blazer over a white top and dark jeans, is singing into a microphone on a stage. She is looking upwards and to the left. Her hands are clasped in front of her. To her left, another person in a light blue shirt is partially visible. In the background, a hand is raised in the air, and a keyboard is visible on a stand. The scene is dimly lit with blue and purple stage lights.

**WHAT WE SEE...**

- **A CHURCH IN WHICH GOD IS GLORIFIED, JESUS IS MAGNIFIED AND THE HOLY SPIRIT IS PRIORITISED.**
- **A CHURCH THAT IS AVAILABLE AND ACCESSIBLE 24/7 TO OUR COMMUNITY. A “CITY” THAT NEVER SLEEPS.**
- **A CHURCH WHERE THE MOST VULNERABLE ARE MADE TO FEEL LIKE THE MOST VALUABLE.**
- **A CHURCH WHERE ALL GENERATIONS ARE EMBRACED, ENCOURAGED AND EQUIPPED.**
- **A CHURCH THAT RESOURCES AND RELEASES ORDINARY PEOPLE TO LIVE EXTRAORDINARY LIVES.**
- **A CHURCH THAT IS BOTH NUMERICALLY LARGE AND SPIRITUALLY DEEP.**
- **A CHURCH WHERE FOUND PEOPLE ROUTINELY FIND PEOPLE.**
- **A CHURCH THAT IS A HAVEN OF HOPE. A PLACE WHERE THOSE WHO ARE STRUGGLING WITH HURTS, HABITS AND HANG-UPS ARE TAKEN ON A JOURNEY TOWARDS RECOVERY AND RESTORATION.**
- **A CHURCH WHERE PEOPLE ARE DEVELOPED AND DISCIPLED TO HAVE AN IMPACT IN ALL SECTORS OF SOCIETY AND INTO THE NATIONS OF THE WORLD.**

A man in a plaid shirt is speaking into a microphone on a stage. In the background, a keyboardist is visible. The scene is dimly lit with stage lights. The text "NEW BUILDING..." is overlaid in the center.

**NEW BUILDING...**

***“... a time to build”***  
**(Ecclesiastes 3:3)**

In light of all that's in our heart for the future, and all that has been prophesied in the past, we believe it's now a time to build.

Our existing facility has been a blessing for many years. However, we're already nearing capacity on Sundays and our children's teams are particularly stretched.

We're believing for even more people to join the family, whilst at the same time seeking to expand the number of ministries, projects and programmes throughout the week. Our vision is certainly bigger than our current building.

As such, we are now actively looking for a site to build a new, purpose-built church centre that will be designed not just to house our Sunday congregation but also become a venue for the community. The Church, by faith, undertook two building projects in the first thirteen years of its existence and now, a further thirty years on, we believe it's our turn and our time to build for the generations to come.

We are now actively looking at land and exploring some open doors of opportunity that which may or may not be divinely orchestrated. Pray for us as we seek to discern God's will in this... and watch this space!

A photograph of a person's arm and hand reaching out towards the right. The person is wearing a dark long-sleeved shirt and dark pants. The background is dark and industrial, with a bright light source creating a strong glow and lens flare. The floor is made of large, light-colored tiles. In the lower right corner, there is a small white cup and some papers on the floor.

# OUR MISSION

# “WE GROW. WE GO.”

*Then the eleven disciples went to Galilee, to the mountain where Jesus had told them to go. When they saw him, they worshiped him; but some doubted. Then Jesus came to them and said, “All authority in heaven and on earth has been given to me. Therefore go and make disciples of all nations, baptising them in the name of the Father and of the Son and of the Holy Spirit, and teaching them to obey everything I have commanded you. And surely I am with you always, to the very end of the age.”*

**Matthew 28:16-20**

The Great Commission was entrusted to eleven disciples who had spent 3 years **growing** in the presence of their Saviour that they might be equipped to effectively **go** into their world and make a difference.

It's disciples making disciples. **Growing** people becoming **going** people.

We want to build a church in which a strong culture of discipleship undergirds our missional activity and as such we'll also be strengthening all of our core ministries to ensure that discipleship is a key part of everything that is planned and programmed.



OUR CULTURE

**WE ARE DEVOTED**

*“They devoted themselves...” (Acts 2:42)*

**WE ARE BIBLICAL**

*“They devoted themselves to the apostles’ teaching” (Acts 2:42)*

**WE ARE RELATIONAL**

*“They devoted themselves to... fellowship” (Acts 2:42)*

**WE ARE PRAYERFUL**

*“They devoted themselves to... prayer” (Acts 2:42)*

**WE ARE SUPERNATURAL**

*“Everyone was filled with awe at the many wonders and signs performed by the apostles” (Acts 2:43)*

**WE ARE INFLUENTIAL**

*“They enjoyed the favour of all the people” (Acts 2:47)*

**WE ARE UNITED**

*“All the believers were together and had everything in common” (Acts 2:44)*

**WE ARE WORSHIPFUL**

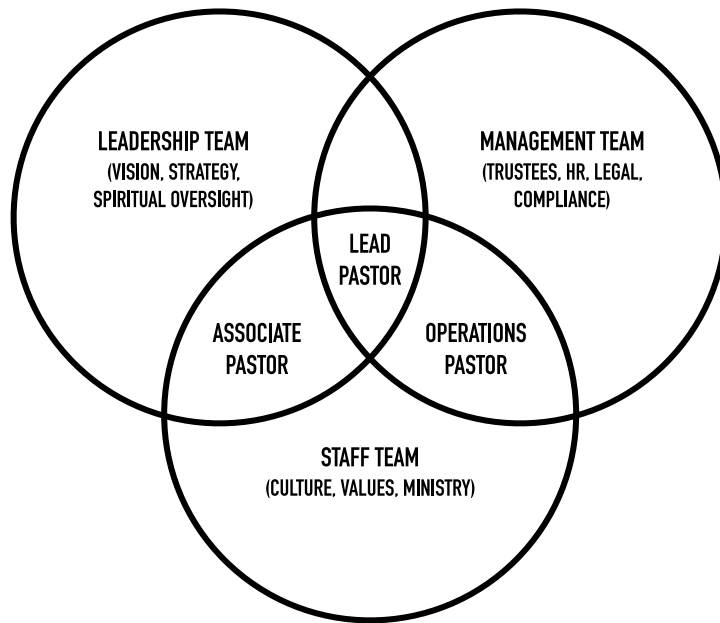
*“They continued to meet together... praising God” (Acts 2:47)*

**WE ARE GROWING**

*“More and more men and women believed in the Lord and were added to their number” (Acts 5:14)*

# OUR STRUCTURE

**At Life Church our leadership and governance model consists of three collaborative teams working in unison – our *leadership team*, our *management team* and our *staff team*.**

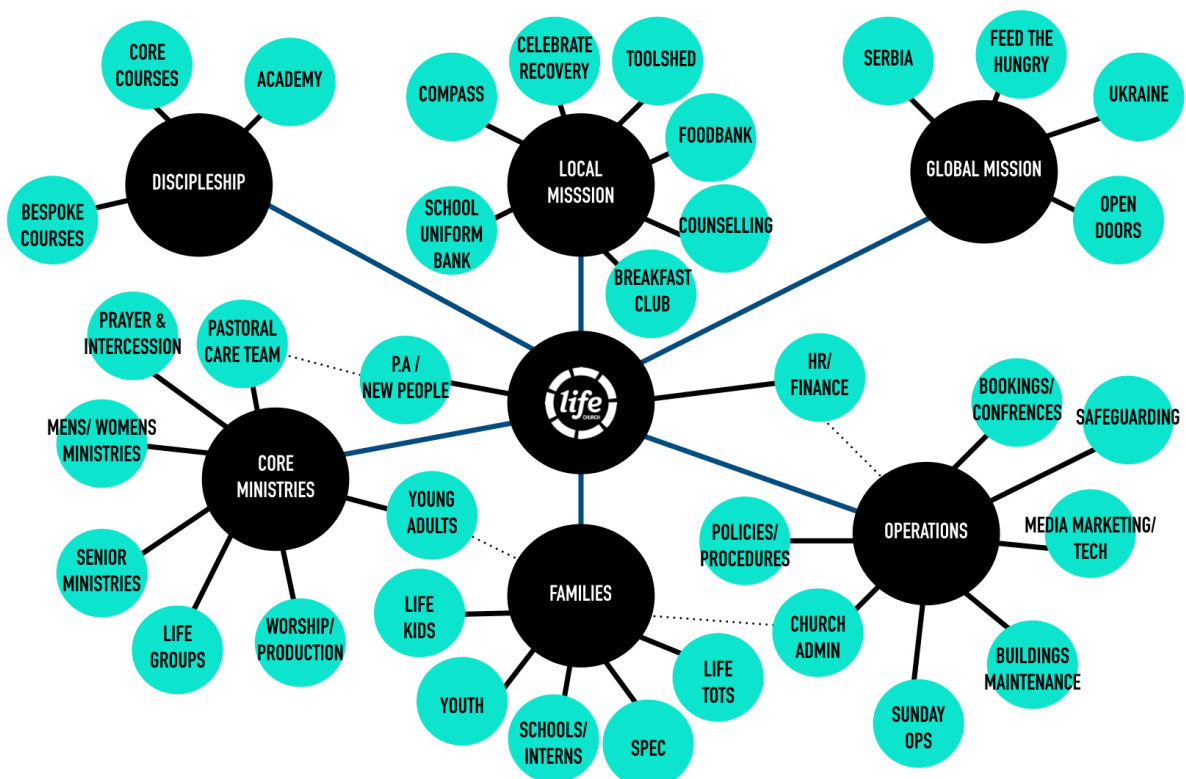


Our leadership team exists to make sure we're ***“Doing the Right Things”***

Our management team exists to make sure we're ***“Doing Things Right”***

Our staff team exists to make sure we're ***“Getting Things Done”***

## ORGANISATION CHART





**WWW.LIFECHURCHEU.COM**

LIFECHURCH, BULKINGTON ROAD, BEDWORTH, CV12 9DG



